



St John Fisher Catholic Primary School

"Growing through God, we learn, laugh and love"

Newsletter 14th January 2022



It's good to see the children back again, ready to face a new year. This term we have building projects taking place which we are very excited about and looking forward to the end results, however it will mean some inconvenience as we navigate around the builders. Please be patient and supportive, it will be worth it as we will have a brand new outdoor play area for the reception children and an all weather pitch for everyone.

St John Fisher
Revision 1.0 Date: 27-09-2021 Drawn by: Louise Rappallo

Key

1. Tarmac Surfacing	9. Sleeper Bridge Tunnel
2. Car Track Markings	10. 4x Traverser Posts
3. 2x Speed Bumps	11. Role Play Shelter
4. 2x Zebra Crossings	12. Role Play Cabin
5. Trunk Shelter	13. Resin Bonded Surfacing
6. 5x Parking Bays	14. 2x Curved Benches
7. Artificial Grass Surfacing	15. Water Pump
8. Double Sandbox with Pulleys	16. Sleeper Retained Mud Pit
	17. Mud Kitchen 3
	18. Picket Fencing & Gate

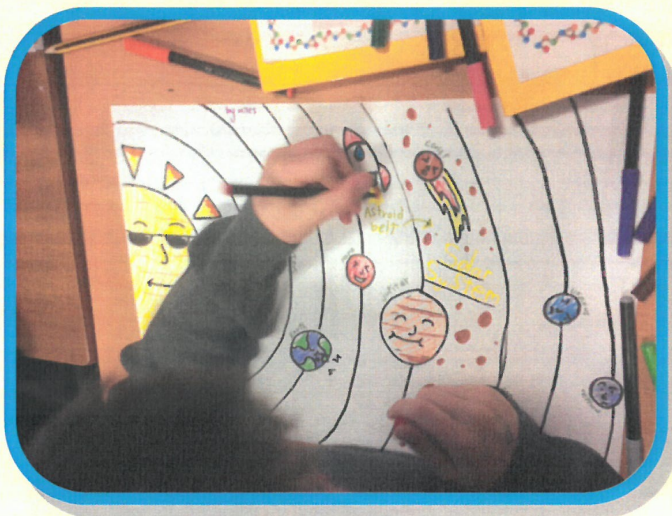
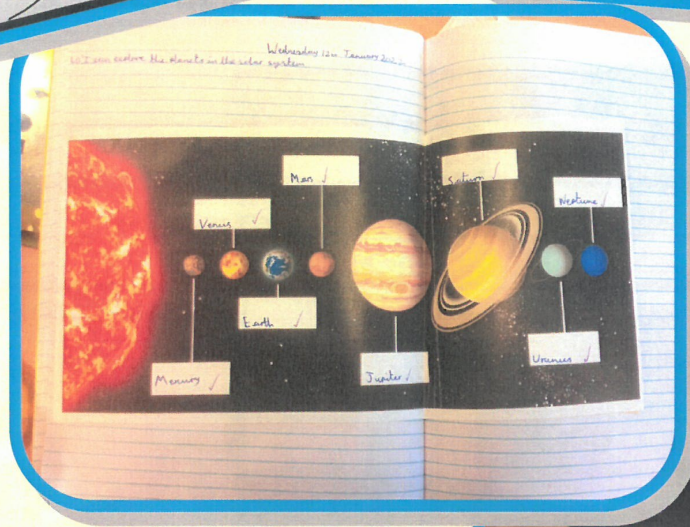
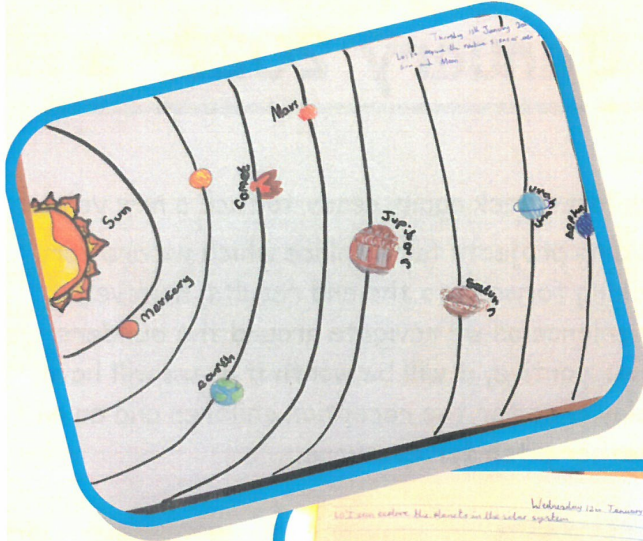
Playsound Services Ltd
Unit 5, Parkin Place, West Pothol, Starmersdale, Lancashire, WN9 5CH
Web: playsoundplaygrounds.co.uk
Tel/Fax: 01605 717220

St John Fisher
Revision 2.0 Date: 27-09-2021 Drawn by: Louise Rappallo

Playsound Services Ltd
Unit 5, Parkin Place, West Pothol, Starmersdale, Lancashire, WN9 5CH
Web: playsoundplaygrounds.co.uk
Tel/Fax: 01605 717220

Year 5 Science.

Sun, Earth and Moon: What is moving and how do we know?



Thursday 20th January - Census Day



The poster features a dark blue background with white snowflakes. At the top, the text 'Winter OLYMPICS DAY' is written in a mix of white and light blue fonts. Below this, a teal banner contains the date 'Thursday 20TH January 2022'. A gold medal with 'CENSUS DAY' written on it is positioned on the right. The menu is divided into three sections: '- MAINS -', '- SIDES -', and '- DESSERTS -'. Each section is flanked by illustrations of winter sports: a snowboarder, a figure skater, a bobsledder, and an ice hockey player. The 'dólce' logo is at the bottom center.

Winter OLYMPICS DAY
Thursday 20TH January 2022

- MAINS -

- Team USA - Chicken Popcorn Bites With BBQ Sauce
- Team Italy - Vegetable Lasagne With Garlic Bread (V)
- Team France - French Baguette With A Choice Of Fillings
- Team GB - Fresh Jacket Potato With A Selection Of Fillings (V)
(Extra Filling Ham & Cheese)

- SIDES -

- Seasoned Potato Wedges
- Sweetcorn
- Garden Peas

- DESSERTS -

- Doughnut "Olympic Ring" (V)
- Golden Medal Sponge & Custard (V)
- Yoghurt

dólce

The Government calculates part of our school funding based on the number of pupils having a school meal on census day.

Please help us secure as much funding as possible by having a school meal on that day.
Above can be found the menu and you can order on the school grid account. There will also be the chance for somebody to win a £5 Amazon voucher on the day.

Awards—Congratulations to the following children



SUPERSTAR AWARDS FOR :

Reception:	Lily Livingstone
Year 1:	Emilia Ostick
Year 2:	Harley Walker
Year 3:	Anna Birzgalis
Year 4:	Leo Flanagan
Year 5:	Henry Hamilton McChrystal
Year 6:	Thomas Murphy



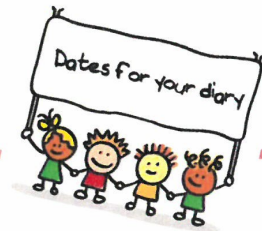
SMILE AWARDS FOR :

Reception:	Blake Catterall
Year 1:	Ivan Cooke
Year 2:	Sophie Lowe
Year 3:	Connor Dixon
Year 4:	Emily Delahunt
Year 5:	Jamie Hodgkins
Year 6:	Liam Johnson



Here is the link if you wish to have a look at the Wednesday World.

<https://www.paperturn-view.com/uk/wednesday-word/joy?pid=MTA101634&v=48.3>



Dates for your Diary

14th January 2022	Closing date for admissions for September 2022
8th February 2022	Safer Internet Day
15th February 2022	Parents evening
16th February 2022	Parents evening
1st March 2022	Choir singing at the Brindley

Lunchtime and after school clubs

Tuesday, lunchtime	Chess Club with Mr Redmond
Tuesday, after school	Football, years 4,5,and 6 with Mr Lynch
Wednesday, after school	Table Tennis with Mr Ray
Thursday, after school	Choir with Mrs Cunliffe
Friday, lunchtime	French Club with Miss Brown

Coming soon, next half term there will be dance and multi skills clubs for KS1 children.

Please continue reading for the latest update and guidance relating to isolation and testing

Halton Borough Council – media release issued 11 January 2022
Keep telling us your test results and help beat COVID-19

From 11 January in England, people, with no symptoms, who receive positive lateral flow device (LFD) test results for coronavirus (COVID-19) will be required to self-isolate immediately and will not need to take a confirmatory PCR test.

However, the rules **have not changed** for anyone *with* COVID-19 symptoms, who should still self-isolate and take a PCR test.

This temporary measure is in place while COVID-19 rates remain high across the UK.

Lateral flow tests are taken by people who *do not* have COVID-19 symptoms.

To limit the spread of the virus, Halton residents are still being encouraged to take a lateral flow test twice weekly and before visiting vulnerable people or attending events and gatherings.

Anyone, without symptoms, who receives a positive LFD test result should [report their result on GOV.UK](https://www.gov.uk) and must self-isolate immediately – but will not need to take a follow-up PCR test.

After reporting a positive LFD test result, they will be contacted by NHS Test and Trace so that their contacts can be traced and must continue to self-isolate.

An *important exception* to this revised approach, applies to people who are eligible for the £500 Test and Trace Support Payment. To access this financial support people who are eligible, will still be asked to take a confirmatory PCR after they receive a positive lateral flow result.

There may also be people who are advised to take a PCR test because they are in a clinically vulnerable group who may need early access to treatment.

Commenting on the temporary changes, Halton's Director of Public Health, Dr Ifeoma Onyia said: "Like the rest of England, infection rates in Halton are currently extremely high, driven by the Omicron variant.

"So, if you get a positive result from a lateral flow test, you should be confident that this is correct."

"Anyone with a positive result should self-isolate straight away and importantly upload your result to gov.uk. Doing this will help us in our response to the current local situation.

"We know at the moment there is a really high demand for lateral flow tests right across England which is making it difficult for some people to get hold of kits and do regular tests.

"I understand this is frustrating, but I would urge everyone to persevere and keep trying the various routes available.

"Test kits can still be ordered online at GOV.uk although they may take longer than usual to arrive.

"Local pharmacies are also receiving test kits, but due to high demand these are going very quickly. The pharmacy collect QR code is not a guarantee of an order, so please be patient with pharmacy staff if they have run out.

"As a Council, we are also continuing to do all we can to distribute tests within the community. Throughout December we gave out 60,000 home test kits and our staff will be giving more out at local supermarkets again this weekend. Over the last few weeks, more than 25,000 tests have been sent to local workplaces and we continue our support to vulnerable and higher risk settings.

"My message to everyone in Halton, is to do your best to keep up with regular testing as we go through this particularly challenging period.

"And for anyone that has symptoms, please book a PCR test straight away. We have a number of local sites where you can get tested and I'm pleased to say that there are currently no capacity issues at these sites."

For the latest information on local testing arrangements visit www.halton.gov.uk/covidtesting
For the latest guidance visit www.gov.uk