



# St John Fisher Catholic Primary School

"Growing through God, we learn, laugh and love"

## NEWSLETTER 21ST March 2025

*On Wednesday the whole school watched a fabulous performance of The Wizard of Oz.*



# LENT

Anna from Mary's Meals called in this week. We gave the money we have raised from our "Raise some dough" cake sale and all the other money we have collected so far.





# Year 1 Trip to Crow Wood Park

As part of their Geography lesson, Year 1 went to Crow Wood Park.



# Year 6 English lesson

Making the most of the sunshine





# KS2 Judo Assembly

*On Friday 21st March  
KS2 had a Judo  
assembly from Danny and  
learnt basic Judo skills*



PIC·COLLAGE

# Choir

Our amazing Choir performed twice this week, at The Brindley and Sts. Peter and Paul.





# Recycle with Tomsk

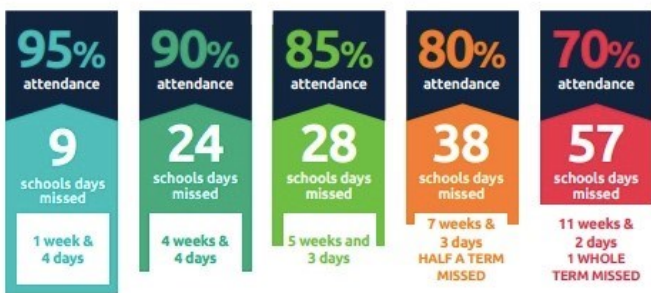


Tomsk has been in Year 1 this week helping the children recycle.



# MOMENTS MATTER, ATTENDANCE COUNTS.

## Every day in school counts...



## and every minute counts...



## Attendance Ladder



Our Attendance Target



## Year Group weekly Attendance

17 Mar 2025 - 21 Mar 2025

Year Group	Attendance		Persistent Absentees
Year R	93.1%		20.7%
Year Y1	94.4%		18.5%
Year Y2	96.9%	3rd	17.2%
Year Y3	99.3%	1st	3.6%
Year Y4	89.7%		23.4%
Year Y5	93.0%		23.3%
Year Y6	97.3%	2nd	10.0%



# Congratulations to the following children

## SMILE AWARDS



## DOJO AWARDS



## SUPERSTAR AWARDS





Please log back into the School Spider App.



## MARCH

- Week commencing 24th March—Year 6 Bikeability
- 27th March—Year 5 Shakespeare -Norton Priory
- 28th March—Dress down and donate for the Easter Bingo
- 31st March— Year 3 and 4 parents invited it at 9.15am to listen to the children sing.

## APRIL

- 3rd April—Big Lent Walk and Disco
- 3rd April—Easter Bingo

**School Closes 1.30pm on Friday 4th April and reopens on Tuesday 22nd April**





**St John Fisher— on Instagram  
stjohnfisherwidnescps**

---

**St John Fisher—Live on X  
Follow us @SJF\_Widnes.**

---

**ALLERGIES**

**Our kitchen is nut free—we would ask that you do not send products containing nuts in to school in lunch boxes or snacks. Thank you for the support with this as it will limit the risk for our children with nut allergies.**

---



<https://www.paperturn-view.com/wednesday-word/good-news?pid=MTA101634&v=163.4>

---

**PARKING AROUND THE SCHOOL AT DROP OFF AND  
COLLECTION**

Can we please ask that you do not park or manoeuvre outside the gates when dropping off/collecting. As you can appreciate the school is situated in a side road which makes parking difficult so we would ask that you park elsewhere rather than risk manoeuvring on Edward Street.

We understand that you are all busy and have places to go of a morning and evening but please lets not wait for a child to be hurt.