



St John Fisher Catholic Primary School

"Growing through God, we learn, laugh and love"

NEWSLETTER 7th March 2025

LENT Bags of Hope

As we try to be Pilgrims of Hope during Lent we are making "Bags of Hope".

Each class will be making their own bag to donate to the local Salvation Army. Essentials such as socks, deodorant, soap, toothpaste etc.



To raise money for CAFOD we will be selling toast on Fridays at break—20p a slice.

Family Fast Cake Sale 50p per cake —Friday 14th March

"The Big Lent Walk" - 3rd April.
More details to follow.

We are also taking part in a "40 days of Kindness" challenge during Lent.



Turn back to God and make changes
in your life

YEAR 4 RECEIVING ASHES IN COLLECTIVE WORSHIP

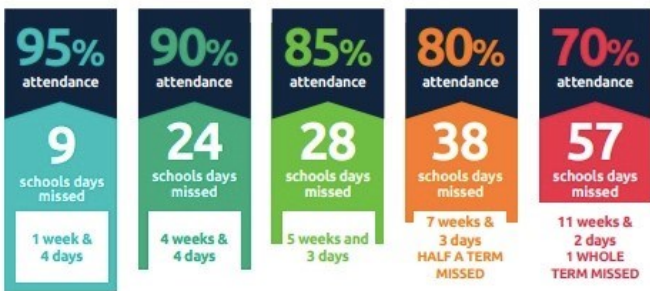


Reception receiving their ashes on Ash Wednesday



MOMENTS MATTER, ATTENDANCE COUNTS.

Every day in school counts...



and every minute counts...



Attendance Ladder



Our Attendance Target



Year Group weekly Attendance

03 Mar 2025 - 07 Mar 2025

Year Group	Attendance	Rank
Year R	95.0%	Joint 3rd
Year Y1	91.9%	
Year Y2	97.6%	1st
Year Y3	95.0%	Joint 3rd
Year Y4	91.0%	
Year Y5	94.7%	
Year Y6	96.7%	2nd

Recycle with Tomsk



Tomsk has been in Year 1 this week helping the children recycle.



Congratulations to the following children

SMILE AWARDS



DOJO AWARDS



SUPERSTAR AWARDS





Please log back into the School Spider App.



MARCH

- 14th March—Family Fast Day Cake sale
- 18th March—Choir at The Brindley
- 19th March—Choir at P&P.
- 19th March—The Wizard of Oz performance (children in school uniform for this)
- Week commencing 24th March—Year 6 Bikeability
- 27th March—Year 5 Shakespeare -Norton Priory
- 28th March—Dress down and donate for the Easter Bingo
-

APRIL

- 3rd April—Big Lent Walk and Disco
- 3rd April—Easter Bingo

School Closes 1.30pm on Friday 4th April and reopens on Tuesday 22nd April



**St John Fisher— on Instagram
stjohnfisherwidnescps**

**St John Fisher—Live on X
Follow us @SJF_Widnes.**

ALLERGIES

Our kitchen is nut free—we would ask that you do not send products containing nuts in to school in lunch boxes or snacks. Thank you for the support with this as it will limit the risk for our children with nut allergies.



<https://www.paperturn-view.com/wednesday-word/good-news?pid=MTA101634&v=163.4>

**PARKING AROUND THE SCHOOL AT DROP OFF AND
COLLECTION**

Can we please ask that you do not park or manoeuvre outside the gates when dropping off/collecting. As you can appreciate the school is situated in a side road which makes parking difficult so we would ask that you park elsewhere rather than risk manoeuvring on Edward Street.

We understand that you are all busy and have places to go of a morning and evening but please lets not wait for a child to be hurt.